

N Type TOPCon

Double-glass mono half-cut modul



Has a life cycle of at least thirty years
Additional power generation is
about 10%-30% higher than
conventional modules



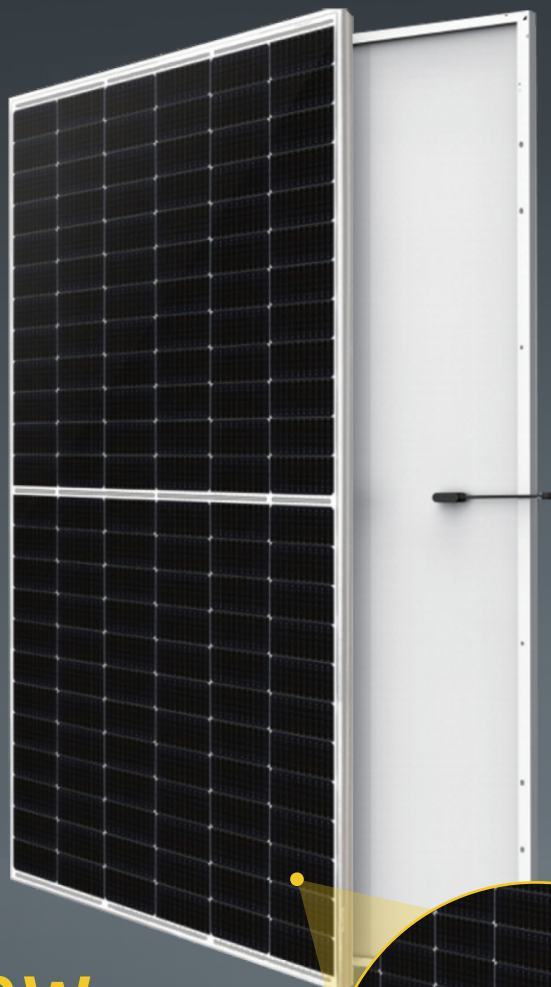
Lower cost of electricity
High bifacial ratio, high module power
Reduce the overall BOS
of the photovoltaic system



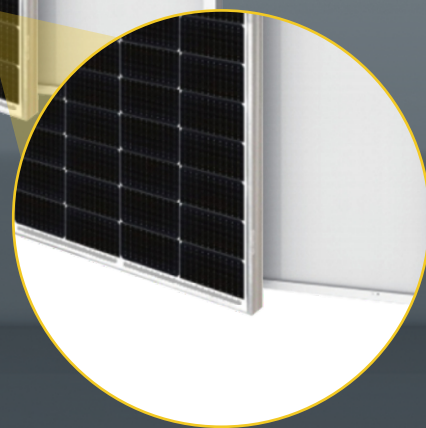
Compared with conventional modules,
it has higher power output under low light
conditions such as haze and cloudy days



Anti-PID (potential induced decay)
by TUV North German
industry standard



580W
182*91mm



Ningbo Osda Solar Co., Ltd.

Tel: 400-1009967

Email: sales@osdasol.com

Website: www.osdasol.com.cn

Ningbo Osda New Energy Production Base: No. 128 Haichuan Road, Jiangbei District, Ningbo, Zhejiang Province

Shandong Osda New Energy Production Base: Zhengwang Town, Hedong District, Linyi City, Shandong Province

Yiwu Osda New Energy Production Base: No. 126 Su Fu Road, Su Xi Town, Yiwu City, Zhejiang Province

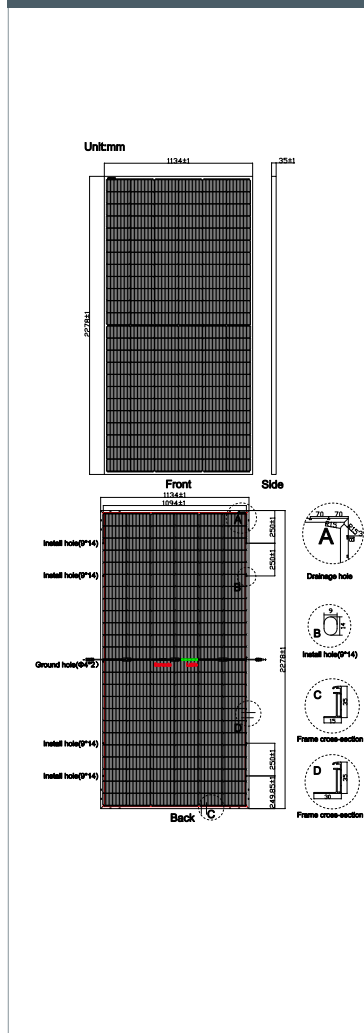


Official website



Official public account

PV DRAWINGS



ELECTRICAL DATA (STC)

Model Type	ODA580-36V-MHD
Peak Power (Pmax)	580.00
Maximum Power Voltage (Vmp)	42.37
Maximum Power Current (Imp)	13.69
Open Circuit Voltage (Voc)	51.06±3%
Short Circuit Current (Isc)	14.46±3%
Module Efficiency (%)	22.5

© *STC: irradiance 1000W/m², AM 1.5, and cell temperature of 25°C

ELLCKERICAL DATA (NOCT)

Model Type	ODA580-36V-MHD
Peak Power (Pmax)	436.00
Maximum Power Voltage (Vmp)	39.69
Maximum Power Current (Imp)	10.99
Open Circuit Voltage (Voc)	48.44±3%
Short Circuit Current (Isc)	11.69±3%

© *NOCT: irradiance 800W/m², AM1.5, ambient temperature 20°C, wind speed 1m/s

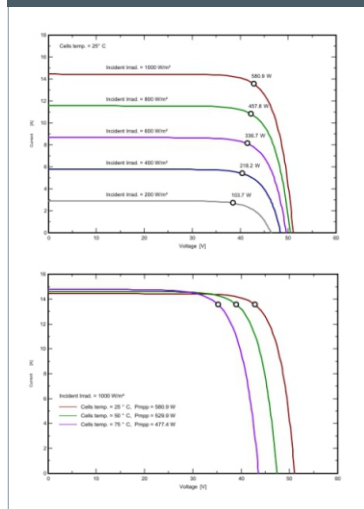
PARAMETER OF DOUBLE-SIDED POWER GENERATION (580W)

Pmax gain	Pmax/W	Vmpp/V	Imp/A	Voc/V	Isc/A
5%	609.00	42.37	14.38	51.06±3%	15.12±3%
15%	667.00	42.37	15.75	51.06±3%	16.56±3%
25%	725.00	42.37	17.12	51.06±3%	18.00±3%

TEMPERATURE&MAXIMUM RATING

Maximum System Voltage (V)	1500V
Maximum Series Fuse Rating (A)	30A
Power Tolerance	0~+3W
Pmax Temperature Coefficients (W/°C)	-0.300%/°C
Voc Temperature Coefficients (V/°C)	-0.250%/°C
Isc Temperature Coefficients (A/°C)	+0.046%/°C
NOCT Nominal Operating Cell Remperature (°C)	45±2°C
Operating and Storage Temperature (°C)	-40~+85°C

IV CURVE (580W)



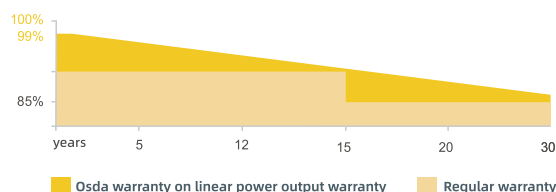
MECHANICAL CHARACTERISTICS

Cell Type	182*91B ifacialM ono
No. of Cells	144 (12*12)
Dimensions (mm)	2278*1134*35mm
Weight (Kg)	32.20kg
Front Glass (mm)	2.0mmc oatedhigh-transparentt emperedg lass
Back glass (mm)	2.0mmh igh-transparenttg lass
Frame	Anodized Aluminium Alloy
Junction box	IP67/IP68 3diodes
Output cables	4mm² cable35cm (InlcudingMC4connector)
MaxWind Load/Snow Load	2400Pa/5400Pa

PACKING WAY

40HQ container	20Packages/620pcs
----------------	-------------------

WARRANTY



15
YEAR

Guarantee on product materail and workmanship

30
YEAR

Linear Power output warranty